

# EFNOTE PRO

Sound Module

**Supplemental Reference Guide**  
(for Ver 1.1)



EN

This supplemental reference guide explains the features and functions added with the firmware version 1.1.  
Please read this guide in conjunction with the Reference Guide for Ver 1.0.

# Contents

KIT EDIT. . . . .3  
Pad. . . . .3  
    Swap Pad. . . . .3  
BUS EFFECTS . . . . .4  
    HPF/EQ, Comp . . . . .4  
AUDIO IN & MAIN L/R. . . . .4  
    Audio Inputs. . . . .4  
SETTINGS. . . . .5  
    Bluetooth . . . . .5  
        App Connection Request Screen. . . . .6  
    Knobs . . . . .7

For the Reference Guide, please refer to the web below.

**EFNOTE PRO Web**  
**[ef-note.com/products/drums/EFNOTEPRO](http://ef-note.com/products/drums/EFNOTEPRO)**



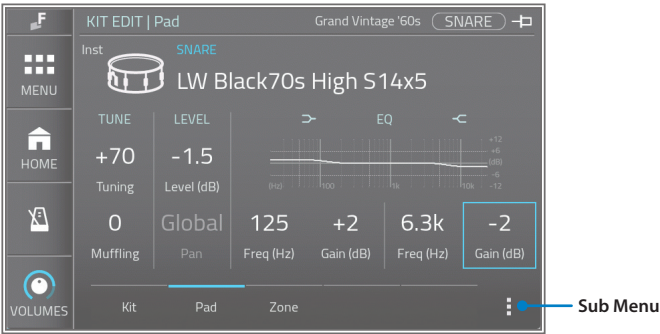
EFNOTE PRO

- \* Read this guide in combination with the Quickstart Guide and Reference Guide.
- \* The information in this document might differ from the product you're using due to differences of the firmware version. For the latest firmware update information, refer to the EFNOTE website.
- \* All illustrations and screens appearing in this document are for the purpose of explaining operation, and may differ from the actual product or specifications.
- \* Specification and design are subject to change without prior notice.
- \* EFNOTE is a trademark or registered trademark of Ef-Note Inc.
- \* Windows is a trademark or registered trademark of Microsoft Corporation.
- \* Mac and macOS are trademarks of Apple Inc., registered in the U.S. and other countries.
- \* Android is a trademark of Google LLC.
- \* ASIO is a trademark and software of Steinberg Media Technologies GmbH.
- \* The Bluetooth® word mark and logos are registered trademarks owned by Bluetooth SIG, Inc.
- \* Company names or product names etc. appearing in this document are the registered trademarks or trademarks of their respective corporate owners.

# KIT EDIT

## ■ Pad

Added the “Swap Pad” function in the sub menu.



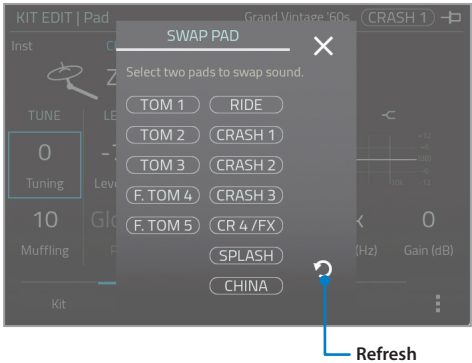
### Sub Menu

SWAP...	Swaps sounds between two tom pads or two cymbal pads. See below for the details.	
---------	---	--

## Swap Pad

Swaps contents on a pad including sound and pad/zone settings, between two tom pads or two cymbal pads.

- 1 Select two pads to swap.  
To clear your first selection, tap the [Refresh].

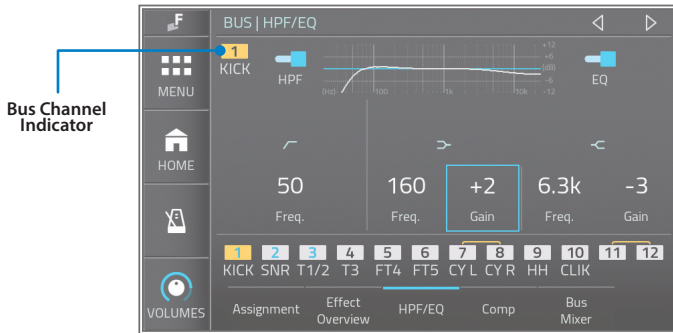


- \* Note numbers are not swapped.
- \* Kick, Snare, and Hi-Hat pads are not supported.
- \* To undo, swap them again.

## BUS EFFECTS

### ■ HPF/EQ, Comp

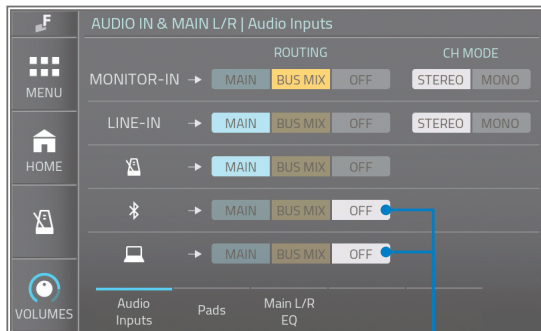
Added the bus channel indicator.



## AUDIO IN & MAIN L/R

### ■ Audio Inputs

"OFF" states are added to the Bluetooth and USB audio input routings.



"OFF" states are added.

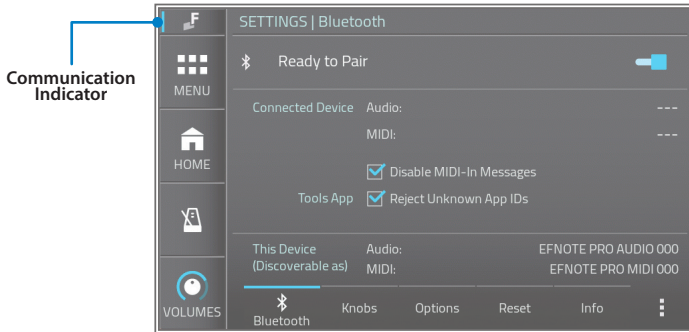
When the Bluetooth audio and/or the USB audio-in are not used, turning the routings to the "OFF" state is a safe way to avoid producing unwanted sounds accidentally, especially when the EFNOTE PRO is being used on stage.

## SETTINGS

### ■ Bluetooth

Supported the "EFNOTE Tools" app.

Added some Bluetooth MIDI and app related functions.



#### Parameters

Disable MIDI-In Messages	When any Bluetooth device is being connected, all incoming MIDI messages are ignored. This can help to prevent producing unwanted sounds or being controlled accidentally.
Reject Unknown App IDs	Rejects connection requests from the EFNOTE Tools app with an App ID not stored as "Auto-Approve". This can avoid showing the connection request screen when someone unknown tries to connect. See "App Connection Request Screen" (p. 6) about the Auto-Approve. * When you want to connect the EFNOTE Tools app with a new App ID, uncheck it.

#### Sub Menu

CLEAR APP IDS...	This will clear all App IDs stored as "Auto-Approve". * Uncheck the "Reject Unknown App IDs" when you want to connect the EFNOTE Tools app newly after clearing App IDs.
------------------	---

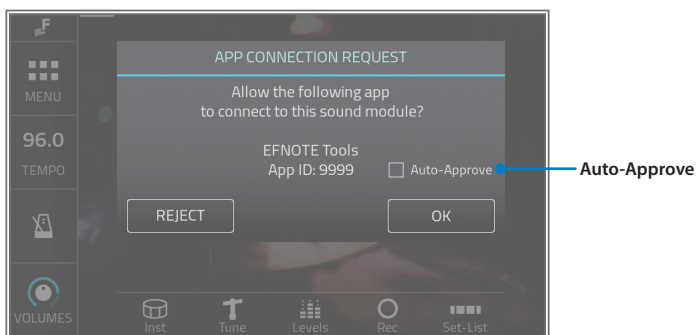
#### Communication Indicator

The communication indicator is lit when the EFNOTE Tools app is connected or communicating.

\* About the EFNOTE Tools app, please refer to the help available within the app.

## App Connection Request Screen

When the EFNOTE Tools app is trying to connect to the sound module, the following screen appears.



Checking the “Auto-Approve” before tapping the [OK] allows you to skip this authorization process the next time you connect the app with the same App ID.

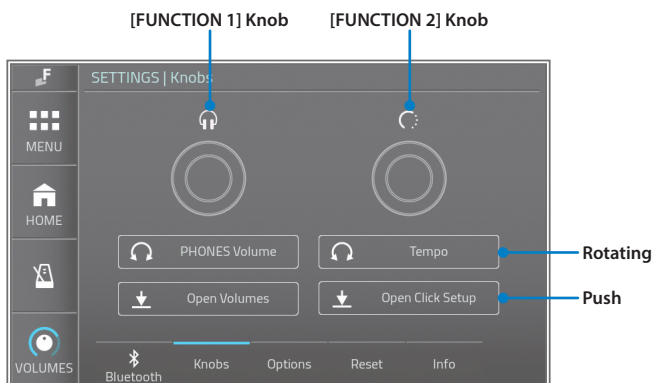
With this feature, you can connect the app remotely without any operations by a drummer.

### NOTE

The maximum communication distance of the Bluetooth standard is about 10m (33 ft). In actual environments, due to obstacles or many nearby WiFi/Bluetooth devices, the communication range will be even shorter. Please be aware of the actual communication range when you use the app.

## ■ Knobs

Added some functions that can be assigned to the knobs.



### Parameters (Rotating)

Disable	Rotating the knob is disabled.
PHONES Volume	Controls the corresponding volume.
Bus Mixer Volume	
MONITOR-IN Volume	
LINE-IN Volume	
Bluetooth-IN Volume	
USB-IN Volume	
Click Volume	
Tempo	Adjusts tempo in 1 BPM step.
Tempo (0.1 Step)	Adjusts tempo in 0.1 BPM steps.
Pad / Bus Ch	<b>Home, Kit Edit, Global Pan, Trigger screens :</b> Selects the pad.
	<b>Bus Assignment screen:</b> Selects the pad/input source.
	<b>Bus Effect Overview, HPF/EQ, Comp, Mixer screens:</b> Selects the bus channel.

### Parameters (Push)

Disable	Pushing the knob is disabled.
Open Volumes	Opens the corresponding
Open Click Setup	window.
Next Slot (Set-List)	Steps forward/backward of the
Previous Slot (Set-List)	set-list slot in Home screen.
Go to Home	Goes to Home screen.
Go to Bus Mixer	Goes to Bus Mixer screen.
Go to Bus Effects	Goes to Bus Effect Overview
Go to Bus HPF/EQ	Goes to Bus HPF/EQ
Go to Bus Comp	Goes to Bus Compressor

\* The function of the [VALUE] knob cannot be changed.

E F N O T E

[ef-note.com](https://ef-note.com)